

Microsoft Surface & Teams

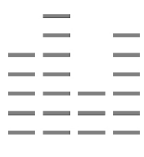
The ultimate device to connect and collaborate remotely



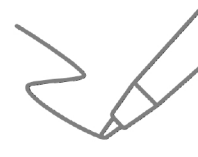
Camera innovation that fuses art and science



Microphones optimized from hardware to software



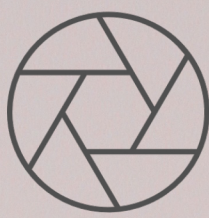
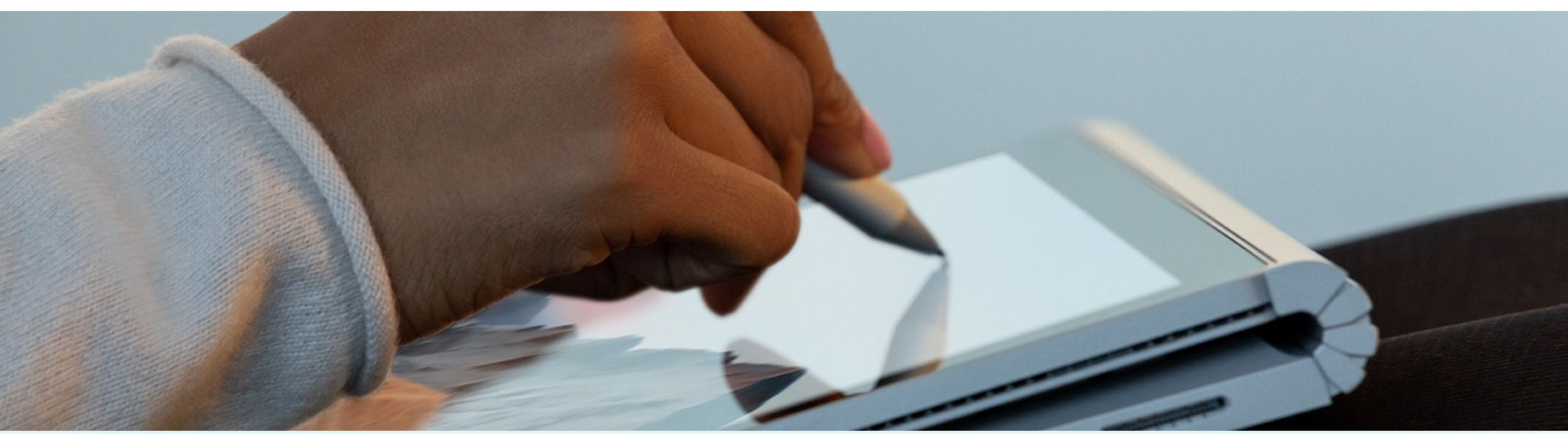
Speakers directed and tuned to immerse



Precision engineered displays and pen for natural inking



Every element orchestrated for an elegant experience



Camera innovation that fuses art and science

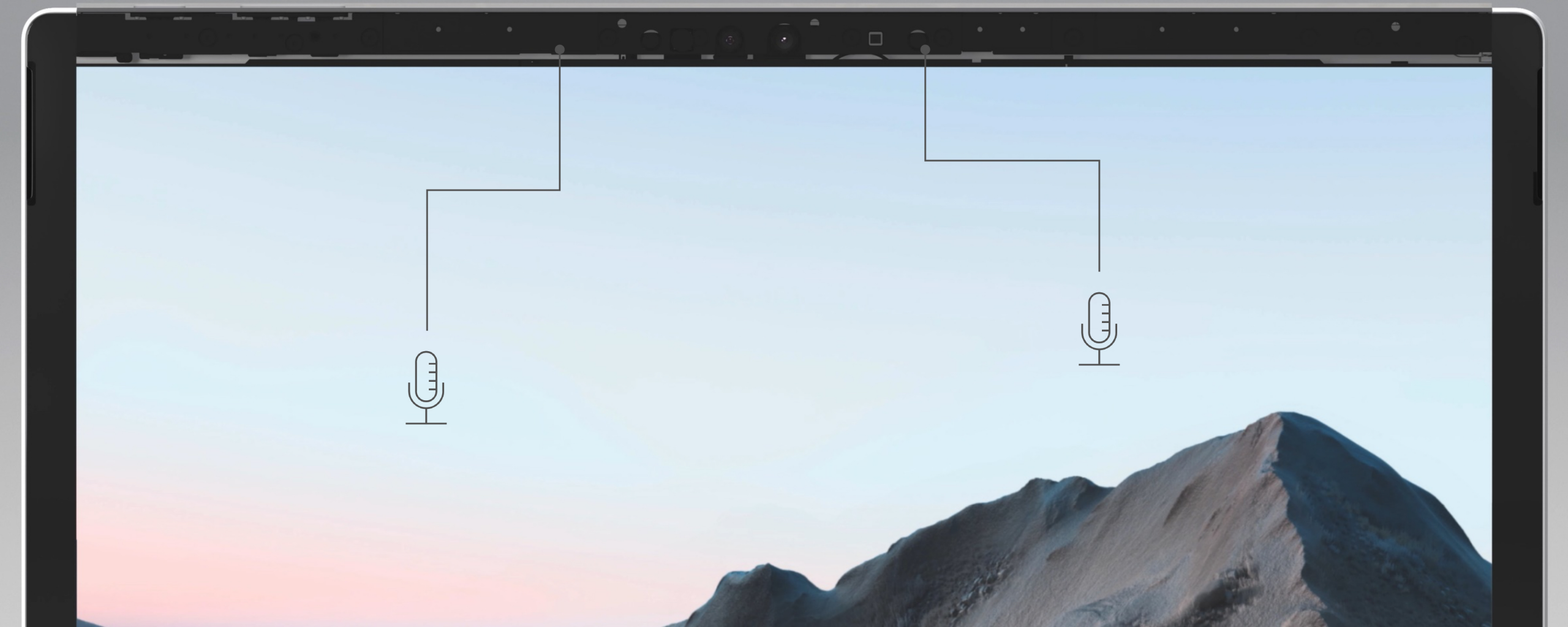
- Camera lens and sensor combinations designed and selected by Microsoft
- 5-megapixel front-facing cameras with f2.0 aperture and 1.4-micron sensor*
- Optimized signal noise ratio processing
- Custom, patented tuning algorithms e.g. skin tones

* Excluding Surface Laptop



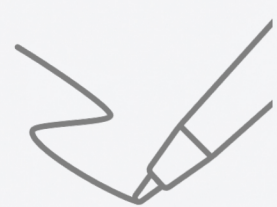
Microphones optimized from hardware to software

- High-quality digital Microelectromechanical Systems (MEMS) microphones
- Linear Microphone array optimally spaced for beamforming
- Audio pre-processing, background noise reduction and acoustic echo cancellation
- Expert tuning in state-of-the-art anechoic chamber for warm, realistic tones and noise suppression.



Speakers directed and tuned to immerse

- Speakers are located to direct sound at people, so it surrounds and immerses them
- Tireless engineering to eradicate unwanted device sounds like fan humming and keyboard reverberations
- Signal processing tuning specifically for voice quality by professional audio engineer



Precision engineered displays and pen for natural inking

- Displays to make inking look real: 3:2 aspect ratio, resolution, contrast ratio, brightness, viewing angle
- Display panels optically bonded to digitizer, touch and Gorilla Glass layers to reduce parallax
- Pen options crafted with weight, 'feel', storage, tilt detection, pressure sensitivity, battery, side buttons, eraser*
- Optimized Hardware Accelerated inking to reduce latency
- Advanced palm rejection to support natural writing



*Features differ for Surface Pen, Surface Slim Pen & Microsoft Classroom Pen



Every element orchestrated for an elegant experience

- Performance for multi-tasking
- Battery for all-day untethered use
- Unparalleled versatility
- Precision keyboards and trackpads
- Models available with LTE Advanced
- Premium design that employees love
- Chip to Cloud Security and Modern Deployment and Management



For more information on Microsoft Surface, please contact us today.